

MARCH 20, 2024

TOWN/VILLAGE OF HARRISON
1 HEINEMAN PLACE
HARRISON, NEW YORK 10528

AMENDMENT NO. 1 TO:

PROJECT: Union Avenue Pedestrian Safety Improvement Project

CONTRACT NO.: D040323

F.A PROJECT

PIN 8762.51

IN THE LETTING OF
March 25, 2024

NOTICE TO PROSPECTIVE BIDDERS

Questions

1. Q: Please confirm if the following insurances are required for this Project?

Railroad Protective Liability
Marine and Indemnity
Builder's Risk
Professional Liability
Pollution Liability

A: Insurance requirements are identified in Section 30 and the Special Note *Insurance Coverage* of the Project Manual.

2. Q: How will rock excavation be paid? Notes on the plan states it will be paid under unclassified excavation. How are we to quantify how much rock will be encountered? Usually the NYSDOT provides an earthwork table showing how much rock was estimated for the project.

A: As stated in the contract plans, rock excavation will be paid under 203.02, Unclassified Excavation and Disposal. It is recommended contractors visit the site to get a better understanding of potential rock excavation required for this project.

3. Q: What are the work hours for the project (are there any time restrictions)?
- A: Time/date restrictions are identified in the contract plans on Dwg. No. WZN-01.
4. Q: Does the Town have a site available for the proposed Engineers office trailer?
- A: Location for Engineer's office/trailer will be responsibility of the contractor.
5. Q: Will the Town provide a staging area for the project?
- A: Staging areas will be the responsibility of the contractor.
6. Q: The project has a 10% DBE goal. What is the grant amount for the project so that we can figure out what the actual dollar amount is?
- A: The 10% DBE goal is based on Contractor's bid.

Project Manual

1. The Bidder shall REPLACE pages II-13 of the bid summary with the one included with this Amendment. The following items have been revised:

| ITEM # | UNIT | ORIGINAL QUANTITY (BASE BID) | NEW QUANTITY (BASE BID) |
|--------|------|------------------------------|-------------------------|
| 206.05 | EA | 3 | 8 |

2. Due to the Federal (Davis Bacon) Rates being updated on March 8, 2024 the Bidder shall replace the current Davis Bacon wage rates with the ones attached.

Construction Plans

1. The following plan sheets have been reissued, which supersede the original sheets as noted:
- a. GNP-01 to GNP-11 – Revised to include updated water utility base mapping and additional test pits to locate the waterline where it may conflict with proposed drainage.
2. Contractor is advised that the description for Item 609.0401 on Dwg. No. TYP-01 shall be Cast-In-Place Concrete Curb Type VF6, rather than Cast-In-Place Concrete Curb Type VF150. No other changes to plans are necessary.

PLEASE BE GOVERNED ACCORDINGLY WHEN SUBMITTING BIDS.

**PLEASE FILL IN AND SIGN BELOW AND EMAIL A SIGNED COPY OF THIS SHEET
BACK TO THE TOWN/VILLAGE OF HARRISON (ENGINEERING@HARRISON-
NY.GOV) TO ACKNOWLEDGE RECEIPT OF THIS AMENDMENT.**

**PLEASE CONTACT CHRISTOPHER GEROUX WITH CREIGHTON MANNING
ENGINEERING AT (518) 689-1847 WITH ANY QUESTIONS.**

Signed

Date

Representing

Thank you for your cooperation in this matter.

Brought Forward \$ _____.

| ITEM NUMBER | ITEM DESCRIPTION | QTY | UNIT | UNIT PRICE IN WORDS | UNIT PRICE (NUMERALS) | TOTAL (NUMERALS) |
|----------------|--------------------------------------|------|------|------------------------------|--------------------------|---------------------|
| 201.06 | CLEARING AND GRUBBING | 1 | LS | _____ Dollars _____ Cents | \$ _____. | \$ _____. |
| 203.02 | UNCLASSIFIED EXCAVATION AND DISPOSAL | 1079 | CY | _____ Dollars _____ Cents | \$ _____. | \$ _____. |
| 203.03 | EMBANKMENT IN PLACE | 600 | CY | _____ Dollars _____ Cents | \$ _____. | \$ _____. |
| 203.07 | SELECT GRANULAR FILL | 689 | CY | _____ Dollars _____ Cents | \$ _____. | \$ _____. |
| 206.0201 | TRENCH AND CULVERT EXCAVATION | 1303 | CY | _____ Dollars _____ Cents | \$ _____. | \$ _____. |
| 206.05 | TEST PIT EXCAVATION | 8 | EACH | _____ Dollars _____ Cents | \$ _____. | \$ _____. |

Page Total \$ _____

Carry Forward \$ _____

Superseded General Decision Number: NY20230017

State: New York

Construction Types: Building, Heavy, Highway and Residential

County: Westchester County in New York.

BUILDING CONSTRUCTION PROJECTS, RESIDENTIAL CONSTRUCTION PROJECTS (consisting of single family homes and apartments up to and including 4 stories), AND HEAVY AND HIGHWAY CONSTRUCTION PROJECTS

Note: Contracts subject to the Davis-Bacon Act are generally required to pay at least the applicable minimum wage rate required under Executive Order 14026 or Executive Order 13658. Please note that these Executive Orders apply to covered contracts entered into by the federal government that are subject to the Davis-Bacon Act itself, but do not apply to contracts subject only to the Davis-Bacon Related Acts, including those set forth at 29 CFR 5.1(a)(1).

| | |
|---|--|
| If the contract is entered into on or after January 30, 2022, or the contract is renewed or extended (e.g., an option is exercised) on or after January 30, 2022: | <ul style="list-style-type: none">. Executive Order 14026 generally applies to the contract.. The contractor must pay all covered workers at least \$17.20 per hour (or the applicable wage rate listed on this wage determination, if it is higher) for all hours spent performing on the contract in 2024. |
| If the contract was awarded on or between January 1, 2015 and January 29, 2022, and the contract is not renewed or extended on or after January 30, 2022: | <ul style="list-style-type: none">. Executive Order 13658 generally applies to the contract.. The contractor must pay all covered workers at least \$12.90 per hour (or the applicable wage rate listed on this wage determination, if it is higher) for all hours spent performing on that contract in 2024. |

The applicable Executive Order minimum wage rate will be adjusted annually. If this contract is covered by one of the Executive Orders and a classification considered necessary for performance of work on the contract does not appear on this wage determination, the contractor must still submit a conformance request.

Additional information on contractor requirements and worker protections under the Executive Orders is available at <http://www.dol.gov/whd/govcontracts>.

| Modification Number | Publication Date |
|---------------------|------------------|
| 0 | 01/05/2024 |
| 1 | 02/09/2024 |
| 2 | 03/08/2024 |

| | Rates | Fringes |
|---|----------|---------|
| HAZARDOUS MATERIAL HANDLER (Duties limited to preparation, wetting, stripping, removal, scraping, vacuuming, bagging and disposing of all insulation materials whether they contain asbestos or not from mechanical systems)..... | \$ 44.97 | 47.35 |
| Insulator/asbestos worker (Includes application of all insulating materials, protective coverings, coatings, and finishes to all types of mechanical sytems)..... | \$ 44.97 | 47.35 |

BOIL0005-001 01/01/2023

| | Rates | Fringes |
|------------------|----------|---------|
| BOILERMAKER..... | \$ 65.88 | 48.47+a |

FOOTNOTE:

a. PAID HOLIDAYS: New Year's Day, Thanksgiving Day, Memorial Day, Independence Day, Labor Day and Good Friday, Friday after Thanksgiving, Christmas Eve Day and New Year's Eve

BRNY0001-003 06/01/2018

| | Rates | Fringes |
|-----------------------------------|----------|---------|
| Pointer, cleaner and caulker..... | \$ 41.96 | 33.38 |

BRNY0004-001 01/02/2023

| | Rates | Fringes |
|-------------------|----------|---------|
| MARBLE MASON..... | \$ 62.82 | 39.03 |

BRNY0005-006 06/01/2022

HEAVY & HIGHWAY CONSTRUCTION

| | Rates | Fringes |
|--|----------|---------|
| BRICKLAYER Bricklayers, Stone Masons, Cement Masons, Plasterers, Pointers, Caulkers and Cleaner..... | \$ 45.29 | 36.50 |

BRNY0005-007 06/01/2022

BUILDING/RESIDENTIAL CONSTRUCTION

| | Rates | Fringes |
|--|----------|---------|
| Bricklayer, Cement Mason, Plasterer & Stonemason..... | \$ 44.79 | 36.50 |

BRNY0007-001 07/01/2022

| | Rates | Fringes |
|--|-------|---------|
|--|-------|---------|

| | | |
|-----------------------------|----------|-------|
| TERRAZZO FINISHER..... | \$ 55.21 | 36.97 |
| TERRAZZO WORKER/SETTER..... | \$ 59.75 | 38.60 |

BRNY0007-002 12/05/2022

| | | |
|--------------------|----------|---------|
| | Rates | Fringes |
| TILE FINISHER..... | \$ 48.44 | 33.02 |

BRNY0020-001 07/04/2022

| | | |
|----------------------|----------|---------|
| | Rates | Fringes |
| MARBLE FINISHER..... | \$ 49.20 | 36.21 |

* BRNY0024-001 01/01/2024

| | | |
|-------------------------------------|----------|---------|
| | Rates | Fringes |
| BRICKLAYER MARBLE POLISHERS..... | \$ 47.65 | 31.00 |

BRNY0052-001 12/05/2022

| | | |
|-----------------|----------|---------|
| | Rates | Fringes |
| Tile Layer..... | \$ 63.04 | 36.30 |

CARP0279-001 07/01/2022

| | | |
|------------------------------|----------|---------|
| | Rates | Fringes |
| Carpenters: Building..... | \$ 45.60 | 32.35 |
| Heavy & Highway..... | \$ 45.60 | 32.35 |
| Residential..... | \$ 29.66 | 21.11 |

CARP0740-001 07/01/2023

| | | |
|-----------------|----------|---------|
| | Rates | Fringes |
| MILLWRIGHT..... | \$ 58.70 | 57.11 |

CARP1556-007 07/01/2023

| | | |
|-------------------|----------|---------|
| | Rates | Fringes |
| Diver Tender..... | \$ 53.57 | 55.31 |
| Diver..... | \$ 74.03 | 55.31 |

CARP1556-009 07/01/2023

| | | |
|-----------------------------------|----------|---------|
| | Rates | Fringes |
| Dock Builder & Piledrivermen..... | \$ 59.16 | 55.31 |

CARP1556-011 07/01/2023

| | | |
|-------------------------------|----------|---------|
| | Rates | Fringes |
| Carpenters: TIMBERMEN..... | \$ 54.05 | 54.99 |

CARP2287-001 07/01/2023

| | | |
|---------------------------------------|----------|---------|
| | Rates | Fringes |
| Carpenters: Soft Floor Layers..... | \$ 55.05 | 47.88 |

| | Rates | Fringes |
|--|----------|--------------|
| ELECTRICIAN (Teledata Technician)..... | \$ 55.75 | 70.29%+16.00 |

a. \$2.00 per hour not to exceed \$14.00 per day.

ELEC1249-001 05/01/2023

| | Rates | Fringes |
|--|----------|----------|
| ELECTRICIAN (LIGHTING AND TRAFFIC SIGNAL WORK Including any and all Fiber Optic Cable necessary for Traffic Signal Systems, Traffic monitoring systems and Road Weather Information systems) | | |
| Flagman..... | \$ 32.84 | 7%+35.40 |
| Ground Digging Machine Operator..... | \$ 49.26 | 7%+35.40 |
| Ground Truck Driver..... | \$ 43.78 | 7%+35.40 |
| Tractor, Trailer Unit..... | \$ 46.52 | 7%+35.40 |
| Lineman & Technician..... | \$ 54.73 | 7%+38.40 |
| Mechanic..... | \$ 43.78 | 7%+35.40 |

FOOTNOTE:

a. PAID HOLIDAYS: New Years Day, Memorial Day, Independence Day, Labor Day, Thanksgiving Day, Christmas Day, President's Day, Good Friday, Decoration Day, Election Day for the President of the Untied States and Election Day for the Governor of the State of New York provided the employee works two days before and two days after the holiday

ELEC1249-006 05/01/2023

| | Rates | Fringes |
|--|----------|----------|
| ELECTRICIAN (LINE CONSTRUCTION) | | |
| Substation and switching structures pipetype cable, underground fuil and gas filled transmission conduit and cable installation, fiber optic ground wire, fiber optic shield wire or any other like product having ground protection or fiber optic capabilities, maintenance jobs or projects; rail-road catenary installation and maintenance bonding of rails; Overhead & underground distribution work & Maintenance; Overhead and under- ground transmission line work: | | |
| Cable Splicer..... | \$ 65.90 | 7%+38.40 |
| Flagman..... | \$ 35.95 | 7%+35.40 |
| Groundman digging machine operator..... | \$ 53.92 | 7%+35.40 |
| Groundman truck driver (tractor trailer unit).... | \$ 50.92 | 7%+35.40 |
| Groundman truck driver;.... | \$ 47.93 | 7%+35.40 |

| | | |
|---------------------------|----------|----------|
| Lineman & Technician..... | \$ 59.91 | 7%+38.40 |
| Mechanic..... | \$ 47.93 | 7%+35.40 |

PAID HOLIDAYS:

a. New Year's Day, President's Day, Memorial Day, Good Friday, Independence Day, Labor Day, Thanksgiving Day, Christmas Day, and Election Day for the President of the United States and Election Day for the Governor of New York State, provided the employee works two days before or two days after the holiday.

ELEC1249-009 01/01/2022

| | Rates | Fringes |
|---|----------|---------|
| ELECTRICIAN (LINE CONSTRUCTION) | | |
| TELEPHONE, CATV FIBEROPTICS CABLE AND EQUIPMENT | | |
| Cable Splicer..... | \$ 36.28 | %3+5.14 |
| Groundman..... | \$ 18.25 | %3+5.14 |
| Installer Repairman-Teledata Lineman/Technician-Equipment Operator..... | \$ 34.43 | %3+5.14 |

ELEV0001-002 03/17/2022

| | Rates | Fringes |
|------------------------------|----------|------------|
| ELEVATOR MECHANIC | | |
| Elevator Constructor..... | \$ 75.14 | 47.446+a+b |
| Modernization and Repair.... | \$ 59.09 | 45.564+a+b |

FOOTNOTE:

a. PAID HOLIDAYS: New Year's Day, Good Friday, President's Day, Memorial Day, Independence Day, Labor Day, Columbus Day, Veteran's Day, Thanksgiving Day, Friday after Thanksgiving, and Christmas Day.

b. PAID VACATION: An employee who has worked less than 5 years shall recieve vacation pay credit on the basis of 4% of his hourly rate for all hours worked; an employee who has worked 5 to 15 years shall receive vacation pay credit on the basis of 6% of his hourly rate for all hours worked; an employee who has worked 15 or more years shall receive vacation pay credit on the basis of 8% of his hourly rate for all hours worked.

* ELEV0138-003 01/01/2024

WESTCHESTER COUNTY (Towns of Bedford, Cortland, Lewisboro, Mt. Kisco, North Salem, Pound Ridge, Somers, and Yorktown)

| | Rates | Fringes |
|------------------------|----------|------------|
| ELEVATOR MECHANIC..... | \$ 70.15 | 37.885+a+b |

FOOTNOTE:

a.Vacation: 6%/under 5 years based on regular hourly rate for all hours worked. 8%/over 5 years based on regular hourly rate for all hours worked.

b. PAID HOLIDAYS: New Year's Day; Memorial Day; Independence Day; Labor Day; Veterans' Day; Thanksgiving Day; the Friday

 ENGI0137-005 03/06/2017

BUILDING & RESIDENTIAL CONSTRUCTION

| | Rates | Fringes |
|----------------------------|----------|---------|
| Power equipment operators: | | |
| GROUP 1-A..... | \$ 53.95 | 28.52+a |
| GROUP 1-B..... | \$ 49.68 | 28.52+a |
| GROUP 2-A..... | \$ 52.03 | 28.52+a |
| GROUP 3-A..... | \$ 50.11 | 28.52+a |
| GROUP 3-B..... | \$ 47.67 | 28.52+a |
| GROUP 4-A..... | \$ 49.60 | 28.52+a |
| GROUP 4-B..... | \$ 41.85 | 28.52+a |
| GROUP 5..... | \$ 45.17 | 28.52+a |
| GROUP 5-A..... | \$ 56.63 | 28.52+a |
| GROUP 5-B..... | \$ 42.83 | 28.52+a |
| GROUP 6..... | \$ 44.92 | 28.52+a |

NOTES: Hazmat: 20% above regular rate
 Pumping operation Premium .50

Crane Operators (100-149 ft) 2.00
 Crane Operators (149 ft +) 3.00

Loader Operators (over 5 cu y) .50
 Shovel Operators (over 4 cu yd)1.00

FOOTNOTE:
 a. New Years Day, Memorial Day, Independence Day, Labor Day
 Thanksgiving Day, Christmas Day, plus Lincoln's Birthday,
 Washington's Birthday, Good Friday, Columbus Day, November
 Election Day, Veteran's Day.

POWER EQUIPMENT OPERATORS CLASSIFICATION

GROUP 1-A: Carrier- trailer horse; concret-portable hoist;
 crane & hoist engineer-steel (concrete, material, super
 structure sub- structure); derrick (stone-steel); elevator
 & cage; hoist- single/double or triple drum; hoist-portable
 mobile unit; hoist engineer-concert (crane-derrick-mine
 hoist); hoist engineer- material; overhead crane; power
 house plant; telephies (cableway); whirly; maintenance
 engineer; Lull hiliift or similar; hydraulic crane 25 ton
 and over; cherry picker 25 tons and over; backhoe Oliver
 88; fordson; dynahoe; dual purpose and similar machines;
 Barber Green Loader-euclid loader or similar type; conway
 or similar mucking macking machines; dragline; gradall;
 shovel; backhoe etc. (crawler or truck); front end loaders;
 hydraulic boom; jersey spreader; lift slab console;
 letournequ or tounapull (scrapers over 20 yds struck);
 mucking machines; pavement breaker (air ram); paver
 (concrete); road boring machine; road mix machines; ross
 carrier and similar machines; post hole digger; shovel
 (tunnels); side boom; spreader (asphalt);
 scoopmobile-tractor-shovel over 1 1/2 yds. trenching
 machines vermeer concrete saw trencher and similar; tractor
 type demolition equipment; winch truck (a frame); hydraulic
 crane over 10 ton up to 25 ton); cherry picker over 10 ton
 up to 25 ton)
 GROUP 1-B: Compressor (steel erection); pulse meter and push
 button buzz box; elevator; mechanic (outside) all types;
 welder; scrapers 20 yds struck and under; machine pulling
 sheep's foot roller; vibratory rollers; roller 4 tons and
 over.

GROUP 2-A: Compactor self-propelled; grader; bulldoze D7 and similar tractors with a draw bar horsepower of 100 or over; bulldozer D6 and under; welder; scraper 20 yds struck and under; machine pulling sheep's foot roller; vibratory rollers.

GROUP 3-A: Asphalt plant; boiler (high pressure); concrete mixing plants; concrete pump; firemen; forklift; forklift (electric); joy drill or similar tractor drilling machine; loader - 1 1/2 yards and under; locomotive (all sizes); mixer concrete - 21E and over; portable asphalt plant; portable batch plant; portable crusher; quarry master; stone crusher; well drilling machine and well point system; cherry picker under 10 tons; hydraulic crane under 10 tons; concert buffy; one yard an up ride on dumper (benford or similar).

GROUP 3-B: Compressor over 125 cu. feet; conveyor belt machine regardless of size; lighting unit (portable & generator); welding machine (steel erection and excavation); and compressor plant; stud machine; ladder hoist.

GROUP 4-A: Air tractor drill; batch plant; bending machine; concrete breaker; concrete spreader; curb cutter machine; farm tractor (all types); finishing machine-concrete; hepavac clean air machine (all similar types: removal of asbestos etc.); material hopper-sand-stone-cement; mixer-concrete-under 21E; mulching grass spreader; pump-gypsum, etc., pump-plaster-grout -fireproofing; shop mechanic (not employed on job site); roller under 4 ton; spreading and fine grading machine; steel cutting machine; syphon pump-air-steam; tar joint machine; turbo jet burner or similar equipment; vibrator (1 to 5); fine grading machine; roof hoist (tugger hoist); television cameras-water- sewer-gas-etc.

GROUP 4-B: Compressor to 125 feet; dust; dust collector; heater all types; pump; pump station (water and sewer); steam jenny; sweeper; chipper; mulcher.

GROUP 5: Motorized roller (walk behind)

GROUP 5-A: Master Mechanic

GROUP 5-B: Utility Man

GROUP 6: Warehouse Man

ENGI0137-006 03/06/2017

HEAVY & HIGHWAY

| | Rates | Fringes |
|----------------------------|----------|---------|
| Power equipment operators: | | |
| GROUP 1..... | \$ 58.54 | 28.15+a |
| GROUP 1-A..... | \$ 51.68 | 28.15+a |
| GROUP 1-B..... | \$ 54.42 | 28.15+a |
| GROUP 2-A..... | \$ 49.52 | 28.15+a |
| GROUP 2-B..... | \$ 51.05 | 28.15+a |
| GROUP 3..... | \$ 48.67 | 28.15+a |
| GROUP 4-A..... | \$ 44.29 | 28.15+a |
| GROUP 4-B..... | \$ 38.13 | 28.15+a |
| GROUP 5..... | \$ 54.69 | 28.15+a |
| GROUP 5-A-1..... | \$ 54.69 | 28.15+a |
| GROUP 5-A-2..... | \$ 66.22 | 28.15+a |
| GROUP 5-A-3..... | \$ 63.97 | 28.15+a |

| | | |
|------------------|----------|---------|
| GROUP 5-A-4..... | \$ 60.03 | 28.15+a |
| GROUP 5-A-5..... | \$ 50.65 | 28.15+a |

POWER EQUIPMENT OPERATORS CLASSIFICATIONS (HEAVY & HIGHWAY)

GROUP 1: Boom Truck; Cherry Picker; Clamshell; Crane,
(Crawler, Truck); Dragline; Rough Terrain Crane

GROUP 1-A: Auger; Auto Grader; Dynahoe and Dual purpose and similar machines; Boat Captain; Boring Machine (all types); Bull Dozer-all sizes; Central Mix Plant Operator; Chipper-all types; Close circuit t.v.; Compactor with Blade; Concrete Portable Hoist; C.M.I. or similar; Conway or similar mucking machines; Gradall, Shovel Backhoe, etc. Grader; Derrick, (Stone- Steel; Elevator & cage, materials or passengers; Front end loaders over 1 1/2 yds.; Hoist Single, Double, Triple Drum, Hoist Portable Mobile Unit; Hoist Engineer-Concrete (Crane-Derrick-Mine Hoist); Hoist Engineer-Material, Hydraulic Boom; Letourneau or Tournapull (Scrapers over 20 yds. struck); Log Skidder; Movable Concrete Barrier Transfer & Transport Vehicle; mucking machines; overhead crane; paver (conccrete); pulsemeter; push button (buzz box) elevator; road mix machines; Robot Hammer (brock or similar), Ross carrier and similar machines; shovels (tunnels); side boom; Slip Form Machine; spreader (asphalt); scoopmobile-tractor-shovel over 1 1/2 yards; trenching machines; telephies- vermeer concrete saw trencher and/or similar; tractor-type demolition equipment, Whirly

GROUP 1-B: Road Paver, Asphalt

GROUP 2-A: Ballast Regulators; Compactor self-propelled; Cow Tracks; Fusion Machine; Rail Anchor Machines; Roller 4 ton and over; Scrapers - 20 yards struck; Switch Tampers; Vibratory roller, etc.

GROUP 2-B: Mechanic (outside) all types

GROUP 3-A: Air tractor drill; asphalt plant; batch plant; boiler (high pressure; concrete breaker; concrete pump concrete spreader; curb cutter machine; farm tractor (all types); finishing machine (concrete); fine grading machine; fireman; forklift; forklift (electric); joy drill or similar tractor drilling machine; loader - 1 1/2 yards and under; locomotive (all sizes), maintenance engineer; machine pulling sheeps foot roller; material hopper; mixer concrete - 21-E and over; mulching grass spreader; portable asphalt plant, portable batch plant, portable crusher; powerhouse plant; quarry master; roller under 4 ton; spreading and fine grading machine; steel cutting machine; stone crusher; sweeper; turbojet burner or similar; well drilling machine ; winch truck ""A"" frame. John Henry Drill or similar.

GROUP 4-A: Service men (fuel or grease truck).

GROUP 4-B: Oiler; Compressor - compressor plant; paint compressor-steel erection; conveyor belt machine; lighting unit (portable & generator); oiler; pumps - pump station-water-sewer- gypsum- plaster, etc.; roller-motorized (walk-behind); welding machine (steel erection excavation); well point system; bending machine; dust collector; mixer - concrete under 21-E; heater all types; steam jenny; syphon pump-air-steam; tar joint machine; vibrator (1 to 5); Compressor Truck Mounted (2-6)

GROUP 5: Oiler

GROUP 5-A-1: Master Mechanic

GROUP 5-A-2: Engineer - all tower cranes, all climbing cranes and all cranes of 100 ton capacity or greater (3900 Manitowac or similar) irrespective of manufacturer and regardless of how the same is rigged (except for pile rigs).

GROUP 5-A-3: Engineer-- Pile Driver

GROUP 5-A-4: Hoist Engineer- Steel -Sub Structure

GROUP 5-A-5: Jersey-spreader, pavement breaker (air ram);
Post Hole Digger

NOTES:

Loader Operator (over 5 cu yds) .50
Shoval Operators (over 4 cu yd) 1.00
Hazmat premium over regular rate 20%

CRANES:

100 ft- 149 ft: receive \$2.00 more than Group 1 rate
149 ft and over receive \$3.00 more than Group 1 rate

FOOTNOTE:

a. PAID HOLIDAYS: New Year's Day; Lincoln's Birthday; Good Friday; Memorial Day; Independence Day; Labor Day; Veterans Day; Columbus Day; November Election Day; Thanksgiving Day; and Christmas Day

IRON0040-001 07/01/2023

WESTCHESTER COUNTY

| | Rates | Fringes |
|-----------------------------|----------|---------|
| IRONWORKER, STRUCTURAL..... | \$ 57.20 | 86.77 |

IRON0046-003 07/01/2023

| | Rates | Fringes |
|--|----------|---------|
| IRONWORKER METALLIC LATHERS AND REINFORCING IRONWORKERS..... | \$ 56.95 | 28.80 |

IRON0197-001 07/01/2023

| | Rates | Fringes |
|-------------------------------------|----------|---------|
| IRONWORKER STONE DERRICKMAN..... | \$ 58.90 | 58.37 |

IRON0580-001 07/01/2023

| | Rates | Fringes |
|-----------------------------|----------|---------|
| IRONWORKER, ORNAMENTAL..... | \$ 47.15 | 63.75 |

* LAB00060-002 06/01/2023

HEAVY/HIGHWAY

| | Rates | Fringes |
|--------------|----------|---------|
| Laborers: | | |
| GROUP 1..... | \$ 49.55 | 26.85 |
| GROUP 2..... | \$ 48.20 | 26.85 |
| GROUP 3..... | \$ 47.80 | 26.85 |
| GROUP 4..... | \$ 47.45 | 26.85 |
| GROUP 5..... | \$ 47.10 | 26.85 |

| | | |
|------------------------------|----------|-------|
| GROUP 6..... | \$ 40.75 | 26.85 |
| GROUP 7..... | \$ 49.10 | 26.85 |
| SHAFT AND TUNNEL IN FREE AIR | | |
| GROUP 1..... | \$ 55.65 | 35.60 |
| GROUP 2..... | \$ 57.80 | 35.60 |
| GROUP 4..... | \$ 64.20 | 35.60 |

LABORERS CLASSIFICATIONS (HEAVY/HIGHWAY):

- GROUP 1: Blasters.
- GROUP 2: Burner, Jumbo Driller, Joy Driller, Wagon Driller, Air Track Driller, Hydraulic Driller, Concrete Form Aligner, Concrete Form and Curb Form Highway (Steel), Asphalt Screedman, Asphalt Raker.
- GROUP 3: Asphalt Curb Machine Operator, Jeeper Operator, Pavement Breaker Operator, Power Saw Operator, Jack Hammer Driller. All types of pneumatic tools gasoline driller, concrete saw, gunniting, railroad spike puller and sandblasting, pipe layer, deck winches on scows, power buggy operator, power wheelbarrow operator.
- GROUP 4: General concrete laborers-anything pertaining to concrete, aggregate or concrete material handling, puddlers, asphalt worker, rock scalers, vibrator operator, bit grinder, concrete grinder, air tampers and all tampers not covered by any other classification, form pin puller, pumps and their operation, service of air power, epoxy and waterproofing worker, fine grade person between forms, barco rammer, guard and guide rail and link fence, steel kings.
- GROUP 5: Common laborers, signal person and pit person , truck spotters, powder person, landscape and nursery person, dump person.
- GROUP 6: Flagperson
- GROUP 7: Asbestos and Toxic Waste laborer

SHAFT AND TUNNEL IN FREE AIR CLASSIFICATIONS

- GROUP 1: Outside laborers
- GROUP 2: Blaster, Concrete and form setters, drill runners, air tuggers, chippers, pneumatic tools, and source of airpower, pumps and their operations, vibrator operators, Puddlers, Chuck tenders, nippers, concrete laborers tunnel sewer and water pipeliners, boring, Laborers, Powder carriers, signalmen, and Brakemen
- GROUP 4: Miners

FOOTNOTE: a. PAID HOLIDAYS: New Year's Day, Lincoln's Birthday, Washington's Birthday, Good Friday, Memorial Day, Independence Day, Labor Day, Columbus Day, November Election Day, Veterans' Day, Thanksgiving Day and Christmas Day.

LAB00235-001 05/01/2016

BUILDING

| | | |
|--------------|----------|---------|
| | Rates | Fringes |
| LABORER..... | \$ 33.30 | 26.25 |

LAB00235-002 05/01/2016

RESIDENTIAL

| | | |
|--------------|----------|---------|
| | Rates | Fringes |
| LABORER..... | \$ 26.80 | 19.55 |

PAIN0009-003 05/01/2023

| | Rates | Fringes |
|---|----------|---------|
| PAINTER | | |
| GLAZIERS..... | \$ 47.95 | 52.77 |
| Painters, Paperhanger, Drywall Finishers & Lead Abatement Worker..... | \$ 43.00 | 40.21 |
| Spray, Scaffold, Sandblasting..... | \$ 46.00 | 40.21 |

PAIN0806-001 10/01/2023

| | Rates | Fringes |
|------------------------------|----------|---------|
| Painters: | | |
| Structural Steel and Bridge. | \$ 56.00 | 54.33 |

PLUM0021-003 05/01/2023

| | Rates | Fringes |
|-------------------------|----------|---------|
| Plumber and Steamfitter | | |
| Zone 1..... | \$ 62.36 | 41.51 |

ROOF0008-003 05/01/2023

| | Rates | Fringes |
|-------------|----------|---------|
| ROOFER..... | \$ 46.50 | 38.37 |

* SFNY0669-002 01/01/2024

| | Rates | Fringes |
|-----------------------|----------|---------|
| SPRINKLER FITTER..... | \$ 50.86 | 30.77 |

SHEE0038-001 07/01/2023

| | Rates | Fringes |
|-------------------------|----------|---------|
| Sheet metal worker..... | \$ 50.60 | 45.62 |

TEAM0456-001 07/01/2018

HEAVY & HIGHWAY CONSTRUCION

| | Rates | Fringes |
|----------------|----------|---------|
| Truck drivers: | | |
| GROUP 1..... | \$ 43.47 | 29.17+a |
| GROUP 2..... | \$ 40.72 | 29.17+a |
| GROUP 3..... | \$ 41.17 | 29.17+a |
| GROUP 4..... | \$ 41.34 | 29.17+a |
| GROUP 5..... | \$ 40.72 | 29.17+a |
| GROUP 6..... | \$ 41.47 | 29.17+a |
| GROUP 7..... | \$ 42.22 | 29.17+a |
| GROUP 8..... | \$ 42.59 | 29.17+a |
| GROUP 9..... | \$ 42.09 | 29.17+a |
| GROUP 10..... | \$ 42.72 | 29.17+a |
| GROUP 11..... | \$ 42.47 | 29.17+a |

Hazardous/Toxic Waste - An additional 20% of the basic hourly wage rate set forth in this wage determination.

CLASSIFICATION DESCRIPTIONS

GROUP 1: Lowboy (carrying equipment)
GROUP 2: Straight jobs: 6-Wheeler, 10-Wheeler, A-Frame Trucks (inside cab), Winch Truck (inside cab), Dynamite Truck, Seeding Truck, Mulching Truck, Agitator Truck, Water

Truck, Cement Trucks (all types), Suburbans, Station Wagons, Cars, Pickups.
GROUP 3: Fuel and tire trucks.
GROUP 4: Tractor trailers (all types)
GROUP 5: 14 Wheeler
GROUP 6: Athey wagon, Belly dumps, Articulated Dumps, Trailer wagons.
GROUP 7: Darts.
GROUP 8: RXS
GROUP 9: Off Road Equipment (Under 40 Tons): Euclid
GROUP 10: Off Road Equipment (Over 40 Tons) Euclid, DJB
GROUP 11: Off Road Equipment (Under 40 Tons) DJB

a. PAID HOLIDAYS: New Year's Day, Lincoln's Birthday, President's Day, Decoration Day, Independence Day, Labor Day, November Election Day, Thanksgiving Day, Day after Thanksgiving and Christmas Day, provided employee works two or more days in the calendar week in which the holiday falls.

PAID VACATION: 4 weeks paid vacation after 20 years of service and 30 days of employment in current contract year; 3 weeks after 10 years of seniority service; 3 weeks after 10 years and 60 days of employment in contract year, 3 weeks and 1 day after 16 years of seniority service, 3 weeks and 2 days after 17 years of seniority service; 3 weeks and 3 days after 18 years of seniority service; 3 weeks and 4 days after 19 years of seniority service; The third week and every additional day shall be granted to employee in the calendar year in which he completes his tenth or other years of seniority service; 2 weeks after 130 days of employment in the calendar year; 2 weeks after 5 years and 90 days seniority service in calander year; 1 week and 1 additional day for each additional 18 days of employment not exceeding 10 days in any one calander year after 90 days of employment. Casual employees 1 day for every 18 days of employment. An employee who does not qualify for vacation shall be paid pro rata on a daily basis. Holiday shall be counted as days worked for vacation benefits.

LEGAL SERVICES FUND: Employer shall contribute \$.20 to the fund on the same basis for all hours paid to employees in the form of holiday pay or vacation pay. In addition to the benefits paid for Health-Welfare and Pension for up to 40 hours worked an additional \$.25 is paid for each hour worked. The employer shall grant 3 calendar days off without loss of pay to an employee who has death in his/her immediate family, inclusive of the day of the funeral.

WELDERS - Receive rate prescribed for craft performing operation to which welding is incidental.

=====

Note: Executive Order (EO) 13706, Establishing Paid Sick Leave for Federal Contractors applies to all contracts subject to the Davis-Bacon Act for which the contract is awarded (and any solicitation was issued) on or after January 1, 2017. If this contract is covered by the EO, the contractor must provide employees with 1 hour of paid sick leave for every 30 hours they work, up to 56 hours of paid sick leave each year. Employees must be permitted to use paid sick leave for their own illness, injury or other health-related needs, including preventive care; to assist a family member (or person who is like family to the employee) who is ill, injured, or has other health-related needs, including preventive care; or for reasons resulting from, or to assist a family member (or person who is

like family to the employee) who is a victim of, domestic violence, sexual assault, or stalking. Additional information on contractor requirements and worker protections under the EO is available at <https://www.dol.gov/agencies/whd/government-contracts>.

Unlisted classifications needed for work not included within the scope of the classifications listed may be added after award only as provided in the labor standards contract clauses (29CFR 5.5 (a) (1) (iii)).

The body of each wage determination lists the classification and wage rates that have been found to be prevailing for the cited type(s) of construction in the area covered by the wage determination. The classifications are listed in alphabetical order of ""identifiers"" that indicate whether the particular rate is a union rate (current union negotiated rate for local), a survey rate (weighted average rate) or a union average rate (weighted union average rate).

Union Rate Identifiers

A four letter classification abbreviation identifier enclosed in dotted lines beginning with characters other than ""SU"" or ""UAVG"" denotes that the union classification and rate were prevailing for that classification in the survey. Example: PLUM0198-005 07/01/2014. PLUM is an abbreviation identifier of the union which prevailed in the survey for this classification, which in this example would be Plumbers. 0198 indicates the local union number or district council number where applicable, i.e., Plumbers Local 0198. The next number, 005 in the example, is an internal number used in processing the wage determination. 07/01/2014 is the effective date of the most current negotiated rate, which in this example is July 1, 2014.

Union prevailing wage rates are updated to reflect all rate changes in the collective bargaining agreement (CBA) governing this classification and rate.

Survey Rate Identifiers

Classifications listed under the ""SU"" identifier indicate that no one rate prevailed for this classification in the survey and the published rate is derived by computing a weighted average rate based on all the rates reported in the survey for that classification. As this weighted average rate includes all rates reported in the survey, it may include both union and non-union rates. Example: SULA2012-007 5/13/2014. SU indicates the rates are survey rates based on a weighted average calculation of rates and are not majority rates. LA indicates the State of Louisiana. 2012 is the year of survey on which these classifications and rates are based. The next number, 007 in the example, is an internal number used in producing the wage determination. 5/13/2014 indicates the survey completion date for the classifications and rates under that identifier.

Survey wage rates are not updated and remain in effect until a new survey is conducted.

Union Average Rate Identifiers

Classification(s) listed under the UAVG identifier indicate that no single majority rate prevailed for those classifications; however, 100% of the data reported for the classifications was union data. EXAMPLE: UAVG-OH-0010

08/29/2014. UAVG indicates that the rate is a weighted union average rate. OH indicates the state. The next number, 0010 in the example, is an internal number used in producing the wage determination. 08/29/2014 indicates the survey completion date for the classifications and rates under that identifier.

A UAVG rate will be updated once a year, usually in January of each year, to reflect a weighted average of the current negotiated/CBA rate of the union locals from which the rate is based.

WAGE DETERMINATION APPEALS PROCESS

1.) Has there been an initial decision in the matter? This can be:

- * an existing published wage determination
- * a survey underlying a wage determination
- * a Wage and Hour Division letter setting forth a position on a wage determination matter
- * a conformance (additional classification and rate) ruling

On survey related matters, initial contact, including requests for summaries of surveys, should be with the Wage and Hour National Office because National Office has responsibility for the Davis-Bacon survey program. If the response from this initial contact is not satisfactory, then the process described in 2.) and 3.) should be followed.

With regard to any other matter not yet ripe for the formal process described here, initial contact should be with the Branch of Construction Wage Determinations. Write to:

Branch of Construction Wage Determinations
Wage and Hour Division
U.S. Department of Labor
200 Constitution Avenue, N.W.
Washington, DC 20210

2.) If the answer to the question in 1.) is yes, then an interested party (those affected by the action) can request review and reconsideration from the Wage and Hour Administrator (See 29 CFR Part 1.8 and 29 CFR Part 7). Write to:

Wage and Hour Administrator
U.S. Department of Labor
200 Constitution Avenue, N.W.
Washington, DC 20210

The request should be accompanied by a full statement of the interested party's position and by any information (wage payment data, project description, area practice material, etc.) that the requestor considers relevant to the issue.

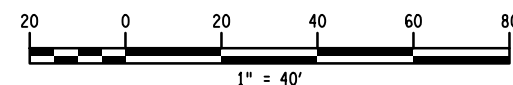
3.) If the decision of the Administrator is not favorable, an interested party may appeal directly to the Administrative Review Board (formerly the Wage Appeals Board). Write to:

Administrative Review Board
U.S. Department of Labor
200 Constitution Avenue, N.W.
Washington, DC 20210

4.) All decisions by the Administrative Review Board are final.

=====

END OF GENERAL DECISION"


TOWN/VILLAGE OF HARRISON
WESTCHESTER COUNTY, NY

FILE NAME = H:\Projects\2024\128-031 Harrison - Union Ave Sidewalks\Working\CADD\128-031.dgn
DATE/TIME = 3/19/2024 2:55:03 PM
USER = kdetrick
PLOT = NYSBOT.CME.PDF.plt



DESIGN SUPERVISOR D. ADAMS
JOB MANAGER C. GEROUX
DESIGN K. GENSLE
CHECK K. DETRICK
DRAFTING K. DETRICK
CHECK D. BORJAS
PROJECT MANAGER C. GEROUX

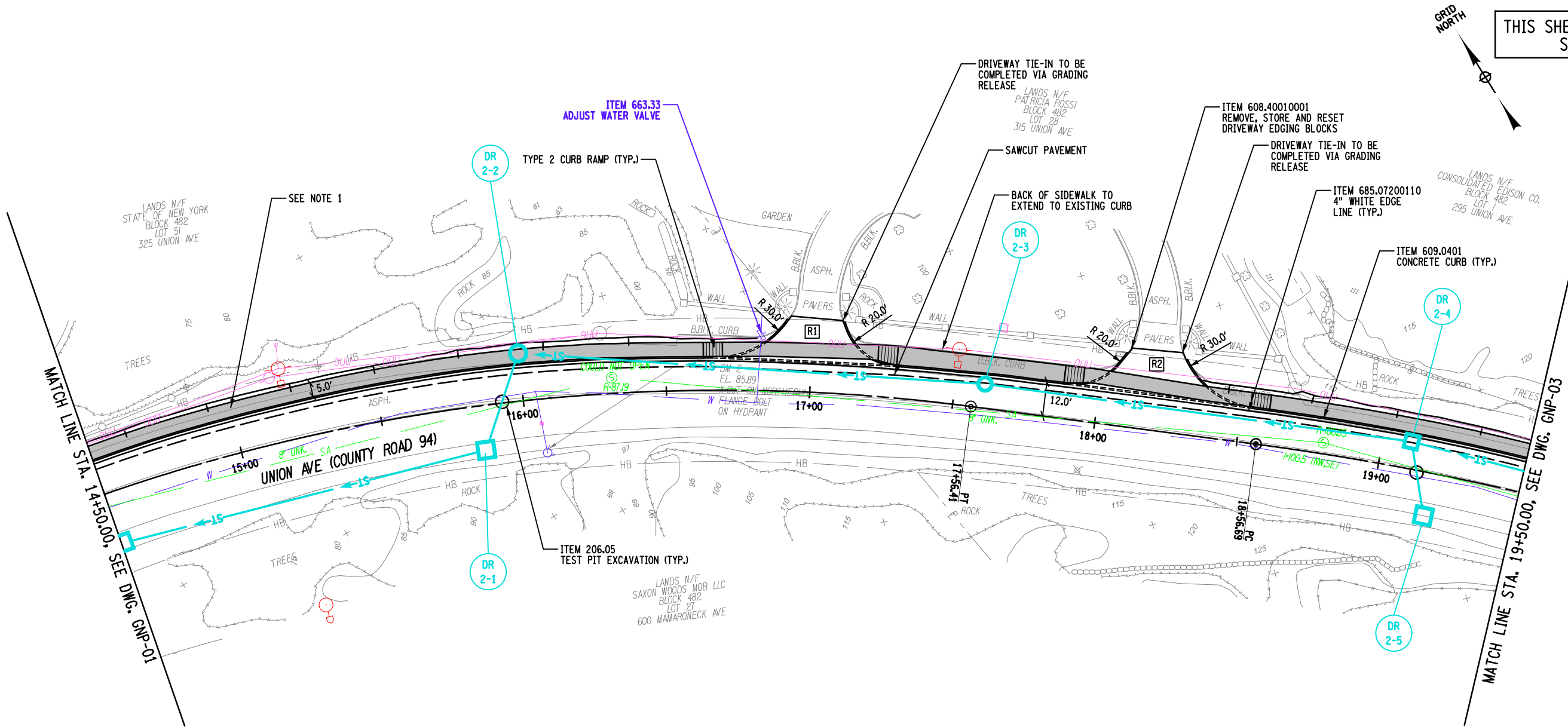
PREPARED BY: DONALD D. ADAMS, P.E.
ON: 3/19/2024

ALTERED BY:
ON:

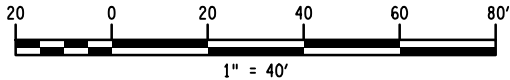


NOTE:
1. WORK BETWEEN STA. 10+66.1± TO STA. 21+57.5±
TO BE INCLUDED AS PART OF BID ALTERNATE 1.

| | | | | | | | | | |
|--|--|--|-------------|---------|----------|---|--|--|--|
| AS-BUILT REVISIONS DESCRIPTION OF ALTERATIONS: | UNION AVENUE PEDESTRIAN SAFETY IMPROVEMENT PROJECT | | PIN 8762.51 | BRIDGES | CULVERTS | ALL DIMENSIONS IN FT UNLESS OTHERWISE NOTED | | CONTRACT NUMBER D040323 | |
| | MAMARONECK AVENUE TO 130 UNION AVENUE | | | | | GENERAL PLAN | | DRAWING NO. GNP-02 | |
| | | | | | | | | | |
| | TOWN/VILLAGE OF HARRISON | | | | | | | SHEET NO. 13A1 | |
| | COUNTY: WESTCHESTER REGION: 8 | | | | | | | | |
| IT IS A VIOLATION OF LAW FOR ANY PERSON, UNLESS THEY ARE ACTING UNDER THE DIRECTION OF A LICENSED PROFESSIONAL ENGINEER, ARCHITECT, LANDSCAPE ARCHITECT, OR LAND SURVEYOR, TO ALTER AN ITEM IN ANY WAY. IF AN ITEM BEARING THE STAMP OF A LICENSED PROFESSIONAL IS ALTERED, THE ALTERING ENGINEER, ARCHITECT, LANDSCAPE ARCHITECT, OR LAND SURVEYOR SHALL STAMP THE DOCUMENT AND INCLUDE THE NOTATION "ALTERED BY" FOLLOWED BY THEIR SIGNATURE, THE DATE OF SUCH ALTERATION, AND A SPECIFIC DESCRIPTION OF THE ALTERATION. | | | | | |  | |  TOWN/VILLAGE OF HARRISON WESTCHESTER COUNTY, NY | |



THIS SHEET SUPERSEDES
SHEET 13



FILE NAME = H:\Projects\2024\128-031 Harrison - Union Ave Sidewalks\Working\CADD\128-031.opn-grp_03.dgn
DATE/TIME = 3/19/2024 2:55:04 PM
USER = kdetrick
PLOT = NYSBOT.CME.PDF.plt

DESIGN SUPERVISOR D. ADAMS JOB MANAGER C. GEROUX DESIGN K. GENSLER CHECK K. GEROUX DRAFTING K. DETRICK CHECK D. BORJAS PROJECT MANAGER C. GEROUX

PREPARED BY: DONALD D. ADAMS, P.E.
ON: 3/19/2024

ALTERED BY:
ON:



NOTE:

1. WORK BETWEEN STA. 10+66.1± TO STA. 21+57.5±
TO BE INCLUDED AS PART OF BID ALTERNATE 1.

AS-BUILT REVISIONS
DESCRIPTION OF ALTERATIONS:

UNION AVENUE PEDESTRIAN SAFETY IMPROVEMENT PROJECT
MAMARONECK AVENUE TO 130 UNION AVENUE

TOWN/VILLAGE OF HARRISON

COUNTY: WESTCHESTER

REGION: 8

PIN 8762.51

BRIDGES

CULVERTS

ALL DIMENSIONS IN FT UNLESS OTHERWISE NOTED

CONTRACT NUMBER

D040323

GENERAL PLAN

DRAWING NO. GNP-03

SHEET NO. 14A1

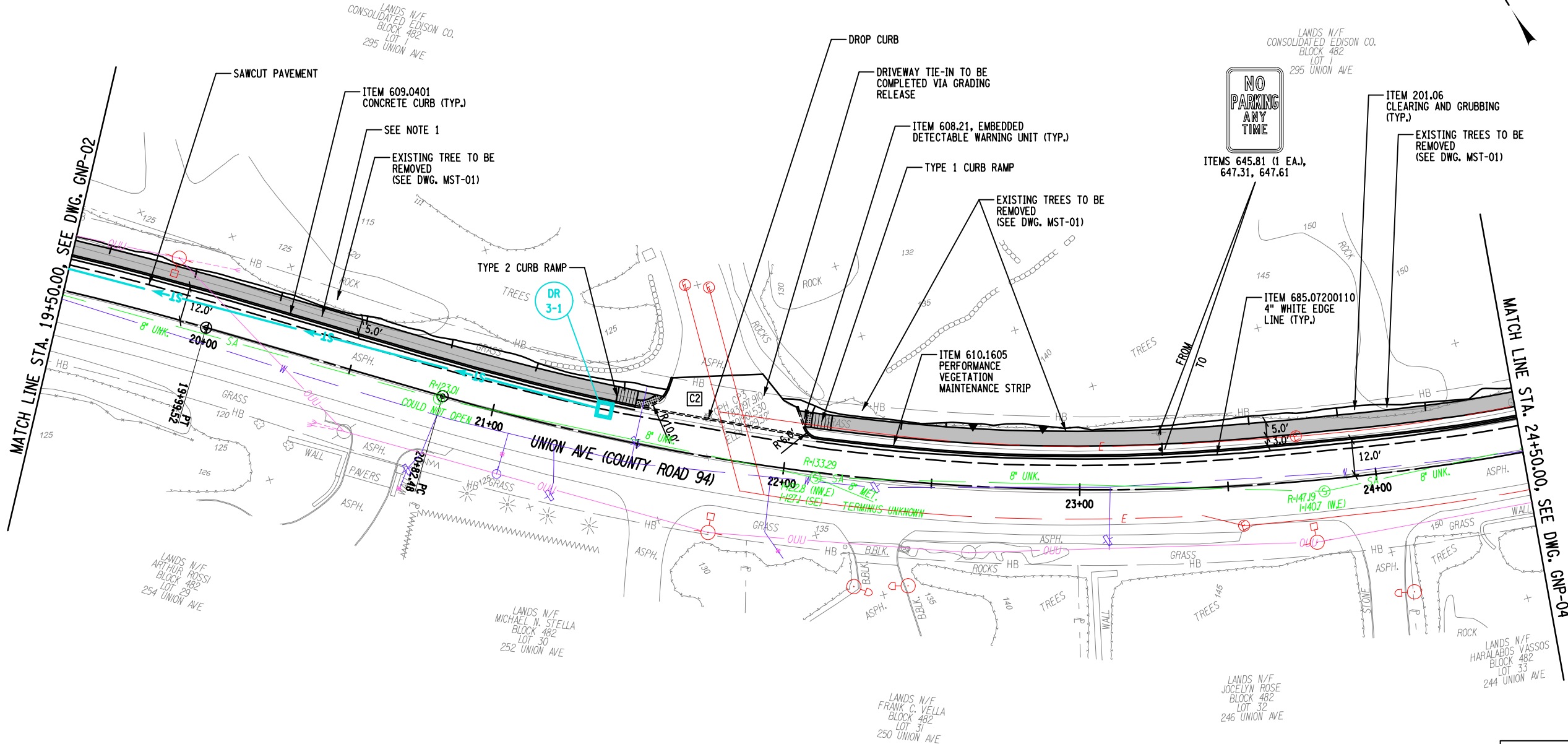
IT IS A VIOLATION OF LAW FOR ANY PERSON, UNLESS THEY ARE ACTING UNDER THE DIRECTION OF A LICENSED PROFESSIONAL ENGINEER, ARCHITECT, LANDSCAPE ARCHITECT, OR LAND SURVEYOR, TO ALTER AN ITEM IN ANY WAY. IF AN ITEM BEARING THE STAMP OF A LICENSED PROFESSIONAL IS ALTERED, THE ALTERING ENGINEER, ARCHITECT, LANDSCAPE ARCHITECT, OR LAND SURVEYOR SHALL STAMP THE DOCUMENT AND INCLUDE THE NOTATION "ALTERED BY" FOLLOWED BY THEIR SIGNATURE, THE DATE OF SUCH ALTERATION, AND A SPECIFIC DESCRIPTION OF THE ALTERATION.



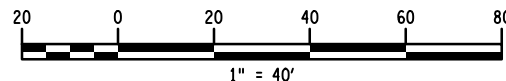
TOWN/VILLAGE OF HARRISON
WESTCHESTER COUNTY, NY

THIS SHEET SUPERSEDES
SHEET 14

GRID
NORTH



| LEGEND | |
|--------|-----------------------------------|
| | PROPOSED STORM DRAINAGE STRUCTURE |
| | PROPOSED STORM SEWER PIPE |
| | ITEM 608.0101 CONCRETE SIDEWALK |



FILE NAME = H:\Projects\2024\128-031 Harrison - Union Ave Sidewalks\Working\CADD\128-031.opn-grp_04.dgn
DATE/TIME = 3/19/2024 2:55:06 PM
USER = kdetrick
PLOT = NYSBOT.CME.PDF.plt

DESIGN SUPERVISOR D. ADAMS
JOB MANAGER C. GEROUX
DESIGN K. GENSLE
CHECK C. GEROUX
DRAFTING K. DETRICK
CHECK D. BORJAS
PROJECT MANAGER C. GEROUX

PREPARED BY: DONALD D. ADAMS, P.E.
ON: 3/19/2024

ALTERED BY:
ON:



AS-BUILT REVISIONS
DESCRIPTION OF ALTERATIONS:

UNION AVENUE PEDESTRIAN SAFETY IMPROVEMENT PROJECT
MAMARONECK AVENUE TO 130 UNION AVENUE
TOWN/VILLAGE OF HARRISON
COUNTY: WESTCHESTER REGION: 8

PIN 8762.51

BRIDGES

CULVERTS

ALL DIMENSIONS IN FT UNLESS OTHERWISE NOTED

CONTRACT NUMBER

D040323

GENERAL PLAN

DRAWING NO. GNP-04

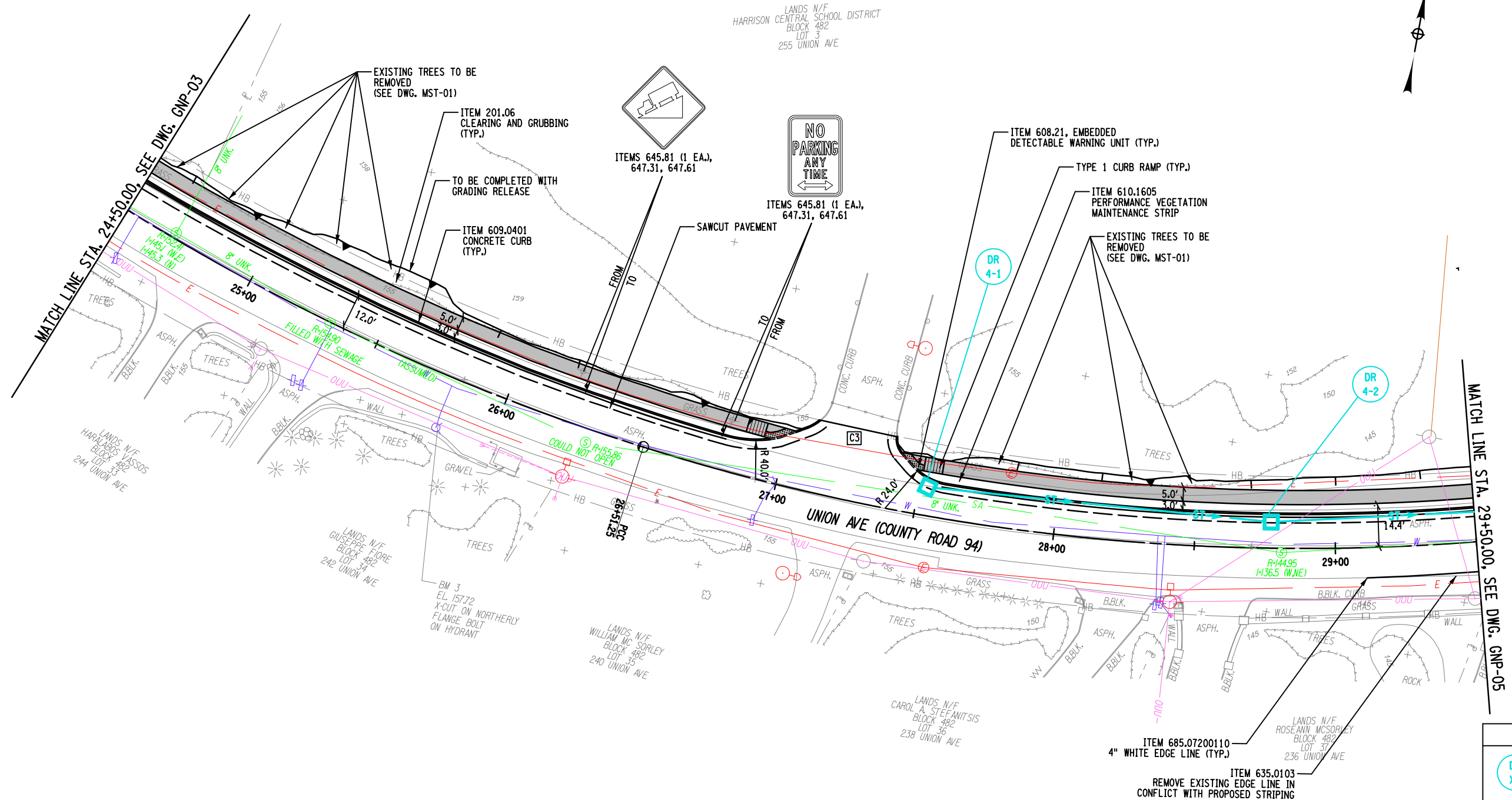
SHEET NO. 15A1

IT IS A VIOLATION OF LAW FOR ANY PERSON, UNLESS THEY ARE ACTING UNDER THE DIRECTION OF A LICENSED PROFESSIONAL ENGINEER, ARCHITECT, LANDSCAPE ARCHITECT, OR LAND SURVEYOR, TO ALTER AN ITEM IN ANY WAY. IF AN ITEM BEARING THE STAMP OF A LICENSED PROFESSIONAL IS ALTERED, THE ALTERING ENGINEER, ARCHITECT, LANDSCAPE ARCHITECT, OR LAND SURVEYOR SHALL STAMP THE DOCUMENT AND INCLUDE THE NOTATION "ALTERED BY" FOLLOWED BY THEIR SIGNATURE, THE DATE OF SUCH ALTERATION, AND A SPECIFIC DESCRIPTION OF THE ALTERATION.

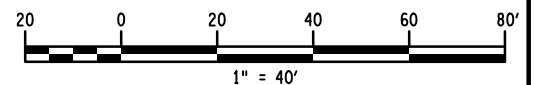


TOWN/VILLAGE OF HARRISON
WESTCHESTER COUNTY, NY

THIS SHEET SUPERSEDES
SHEET 15



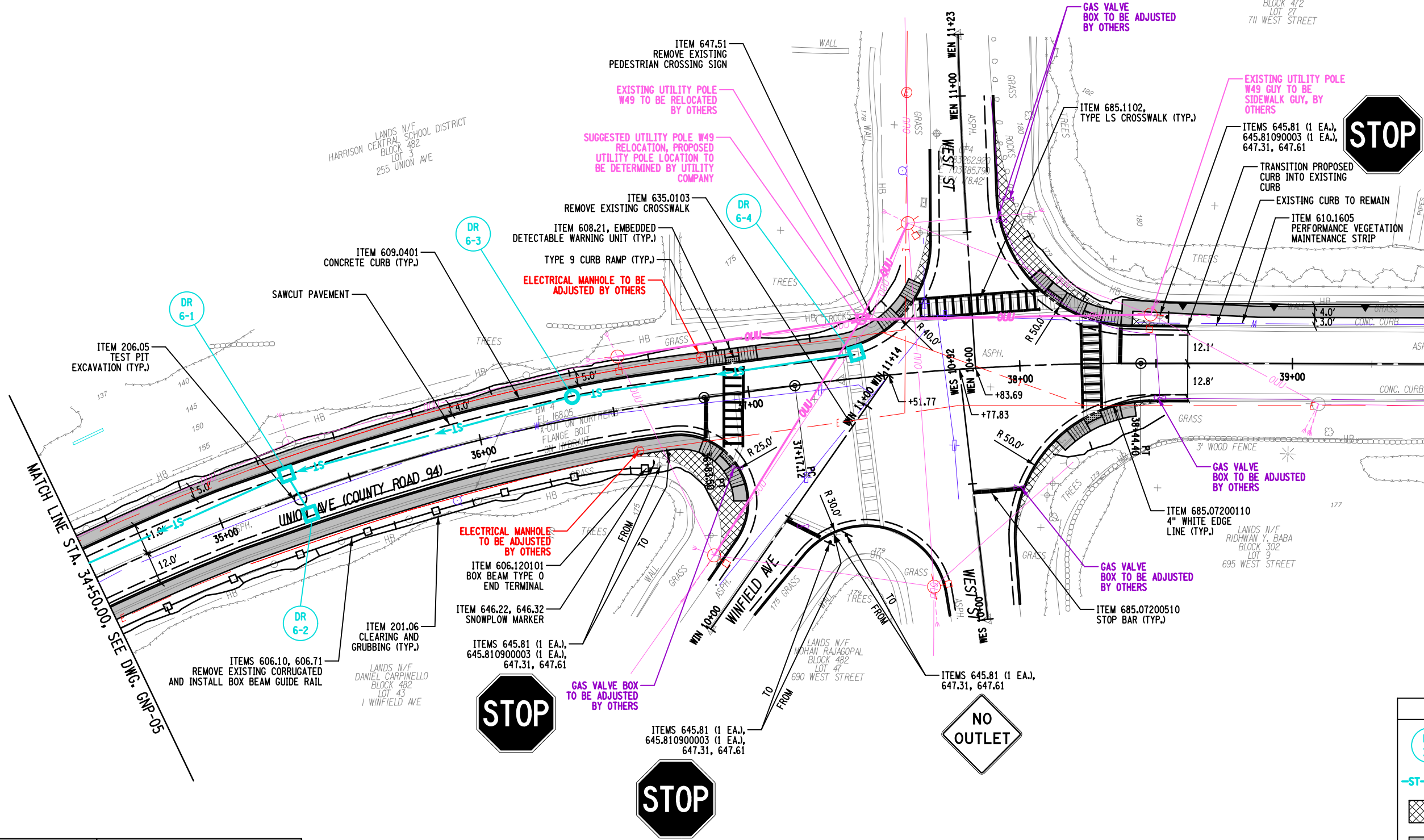
| LEGEND | |
|--------|-----------------------------------|
| | PROPOSED STORM DRAINAGE STRUCTURE |
| | PROPOSED STORM SEWER PIPE |
| | ITEM 608.0101 CONCRETE SIDEWALK |



FILE NAME = H:\Projects\2024\124-031 Harrison - Union Ave Sidewalks\Working\CADD\ dgn\124-031.oph-grp_06.dgn
DATE/TIME = 3/19/2024 2:55:07 PM
USER = kdetrick
PLOT = NYSBOT.CME.PDF.plt of g

DESIGN SUPERVISOR D. ADAMS JOB MANAGER C. GEROUX DESIGN K. GENSLEER DRAFTING K. DETRICK CHECK D. BORJAS PROJECT MANAGER C. GEROUX

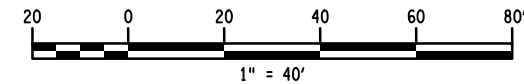
THIS SHEET SUPERSEDES SHEET 17



MATCH LINE STA. 39+50.00, SEE DWG. GNP-07


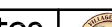
LEGEND

- DR XX PROPOSED STORM DRAINAGE STRUCTURE
- ST- PROPOSED STORM SEWER PIPE
- ITEM 203.02 PAVEMENT REMOVAL
- ITEM 608.0101 CONCRETE SIDEWALK



PREPARED BY: DONALD D. ADAMS, P.E.
ON: 3/19/2024

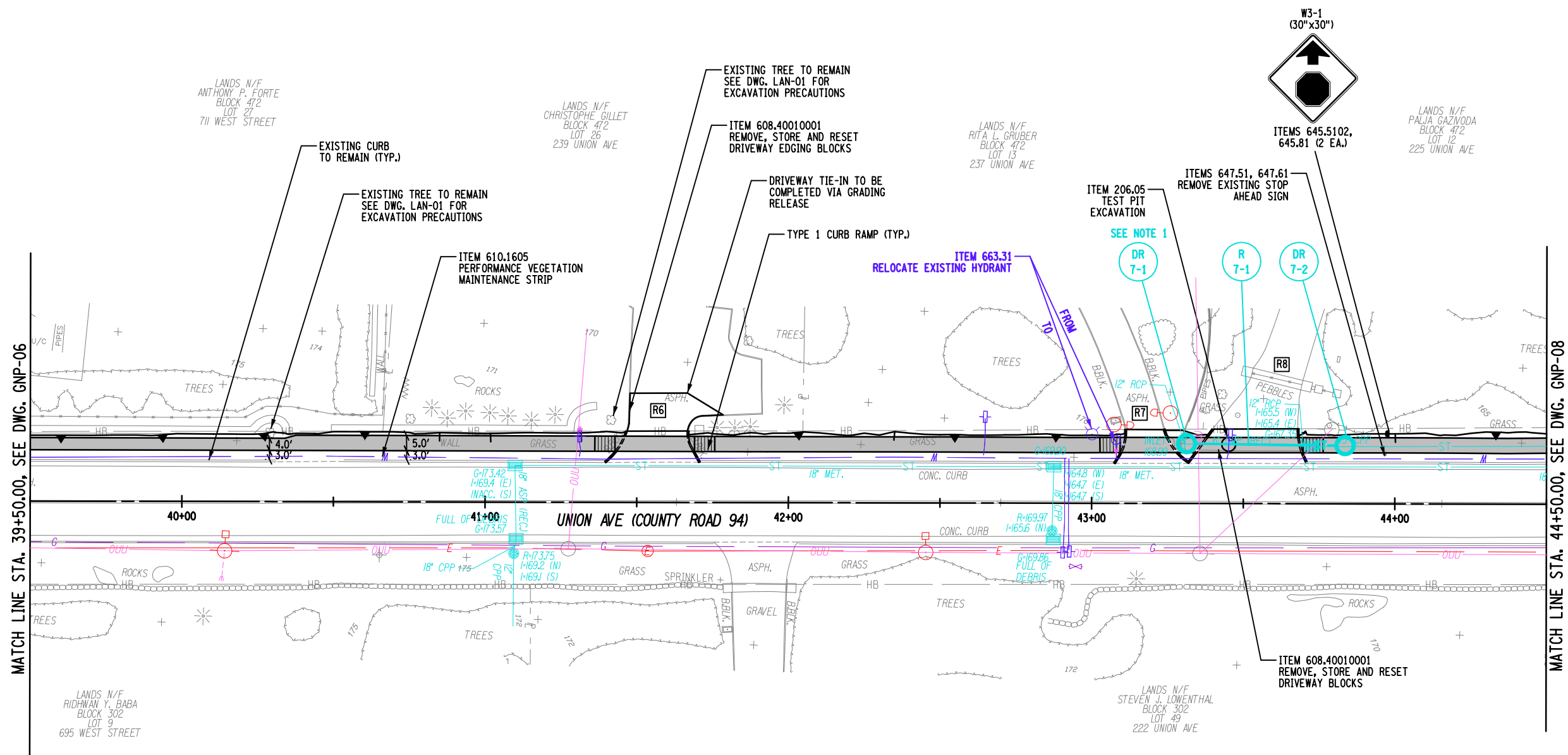
ALTERED BY:
ON:

| | | | | | | | | | |
|--|--|--|-------------|---------|----------|---|--|--|--|
| AS-BUILT REVISIONS DESCRIPTION OF ALTERATIONS: | UNION AVENUE PEDESTRIAN SAFETY IMPROVEMENT PROJECT | | PIN 8762.51 | BRIDGES | CULVERTS | ALL DIMENSIONS IN FT UNLESS OTHERWISE NOTED | | CONTRACT NUMBER D040323 | |
| | MAMARONECK AVENUE TO 130 UNION AVENUE | | | | | GENERAL PLAN | | DRAWING NO. GNP-06 | |
| | | | | | | | | SHEET NO. 17A1 | |
| | TOWN/VILLAGE OF HARRISON | | | | | | | | |
| | COUNTY: WESTCHESTER REGION: 8 | | | | | | | | |
| IT IS A VIOLATION OF LAW FOR ANY PERSON, UNLESS THEY ARE ACTING UNDER THE DIRECTION OF A LICENSED PROFESSIONAL ENGINEER, ARCHITECT, LANDSCAPE ARCHITECT, OR LAND SURVEYOR, TO ALTER AN ITEM IN ANY WAY. IF AN ITEM BEARING THE STAMP OF A LICENSED PROFESSIONAL IS ALTERED, THE ALTERING ENGINEER, ARCHITECT, LANDSCAPE ARCHITECT, OR LAND SURVEYOR SHALL STAMP THE DOCUMENT AND INCLUDE THE NOTATION "ALTERED BY" FOLLOWED BY THEIR SIGNATURE, THE DATE OF SUCH ALTERATION, AND A SPECIFIC DESCRIPTION OF THE ALTERATION. | | | | | |  | |  TOWN/VILLAGE OF HARRISON WESTCHESTER COUNTY, NY | |

FILE NAME = H:\Projects\2024\128-031 Harrison - Union Ave Sidewalks\Working\CADD\dwg\128-031-0ph-grp-07.dgn
DATE/TIME = 3/19/2024 2:55:08 PM
USER = kdetrick
PLOT = NYSBOT.CME.PDF.plt



DESIGN SUPERVISOR D. ADAMS
JOB MANAGER C. GEROUX
DESIGN K. GENSLE
CHECK C. GEROUX
DRAFTING K. DETRICK
CHECK D. BORJAS
PROJECT MANAGER C. GEROUX

THIS SHEET SUPERSEDES
SHEET 18



NOTE:
1. IT IS DESIGNERS INTENT TO CONNECT EXISTING
PVC RESIDENTIAL DRAINAGE PIPE TO PROPOSED
MANHOLE.



| | | | | | | | | | |
|--|--|--|-------------|---------|----------|---|----------------|--|--|
| AS-BUILT REVISIONS DESCRIPTION OF ALTERATIONS: | UNION AVENUE PEDESTRIAN SAFETY IMPROVEMENT PROJECT | | PIN 8762.51 | BRIDGES | CULVERTS | ALL DIMENSIONS IN FT UNLESS OTHERWISE NOTED | | CONTRACT NUMBER | |
| | MAMARONECK AVENUE TO 130 UNION AVENUE | | | | | GENERAL PLAN | | D040323 | |
| | | | | | | | | | |
| | TOWN/VILLAGE OF HARRISON | | | | | | | DRAWING NO. GNP-07 | |
| | COUNTY: WESTCHESTER | | | | | REGION: 8 | SHEET NO. 18A1 | | |
| IT IS A VIOLATION OF LAW FOR ANY PERSON, UNLESS THEY ARE ACTING UNDER THE DIRECTION OF A LICENSED PROFESSIONAL ENGINEER, ARCHITECT, LANDSCAPE ARCHITECT, OR LAND SURVEYOR, TO ALTER AN ITEM IN ANY WAY. IF AN ITEM BEARING THE STAMP OF A LICENSED PROFESSIONAL IS ALTERED, THE ALTERING ENGINEER, ARCHITECT, LANDSCAPE ARCHITECT, OR LAND SURVEYOR SHALL STAMP THE DOCUMENT AND INCLUDE THE NOTATION "ALTERED BY" FOLLOWED BY THEIR SIGNATURE, THE DATE OF SUCH ALTERATION, AND A SPECIFIC DESCRIPTION OF THE ALTERATION. | | | | | |  | |  TOWN/VILLAGE OF HARRISON WESTCHESTER COUNTY, NY | |



FILE NAME = H:\Projects\2024\128-031 Harrison - Union Ave Sidewalks\Working\CADD\128-031.dgn
DATE/TIME = 3/19/2024 2:55:09 PM
USER = kdetrick
PLOT = NYSDOT.CME.PDF.plt

DESIGN SUPERVISOR D. ADAMS
JOB MANAGER C. GEROUX
DESIGN K. GENSLE
CHECK C. GEROUX
DRAFTING K. DETRICK
CHECK D. BORJAS
PROJECT MANAGER C. GEROUX

PREPARED BY: DONALD D. ADAMS, P.E.
ON: 3/19/2024

ALTERED BY:
ON:

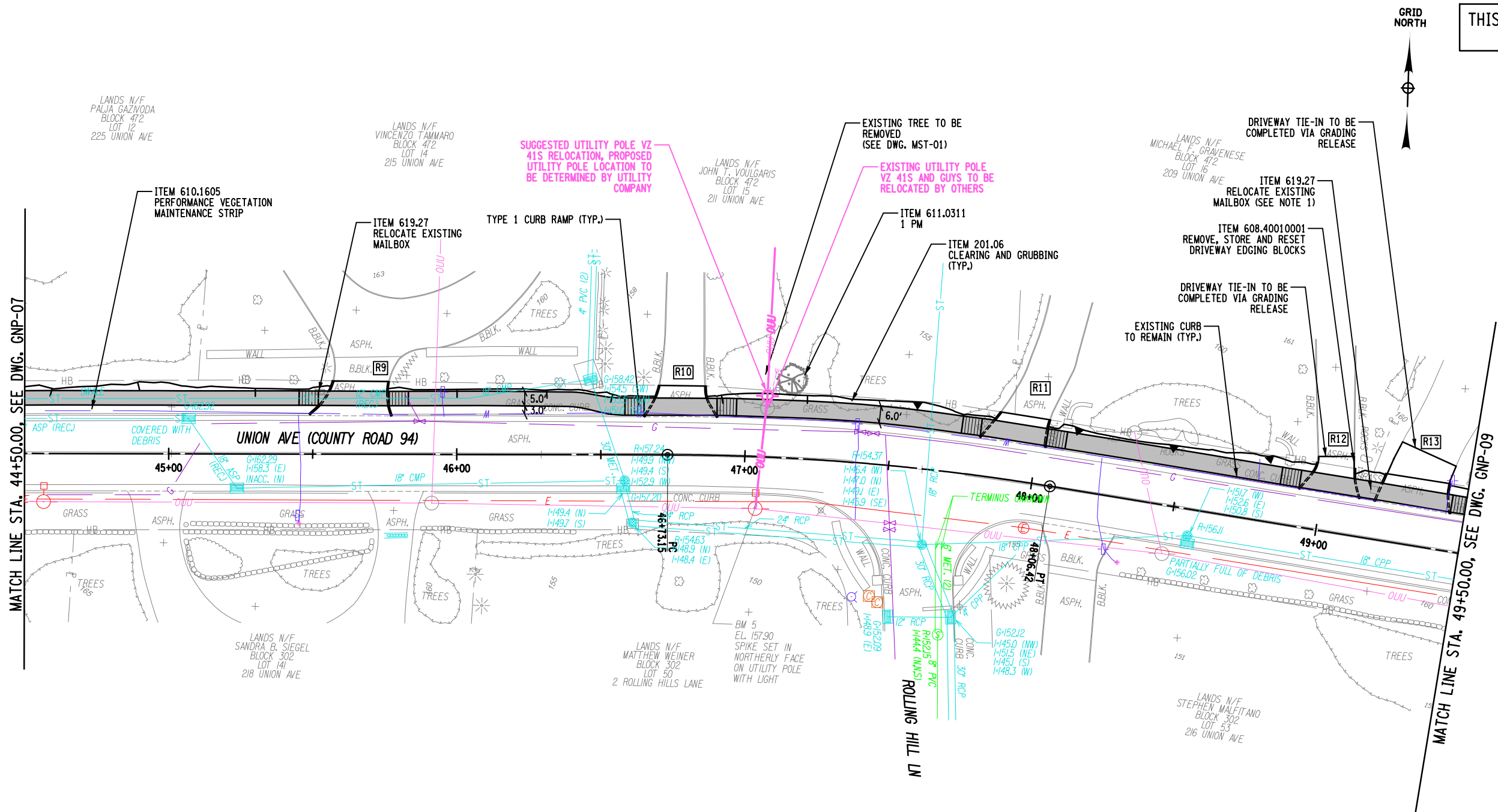
NOTE:

1. CONTRACTOR TO COORDINATE WITH PROPERTY OWNER ON RELOCATION OF MAILBOX.

| | | | | | | | |
|---|--|--|-------------|---------|----------|---|----------------------------|
| AS-BUILT REVISIONS DESCRIPTION OF ALTERATIONS: | UNION AVENUE PEDESTRIAN SAFETY IMPROVEMENT PROJECT | | PIN 8762.51 | BRIDGES | CULVERTS | ALL DIMENSIONS IN FT UNLESS OTHERWISE NOTED | CONTRACT NUMBER D040323 |
| | MAMARONECK AVENUE TO 130 UNION AVENUE | | | | | | DRAWING NO. GNP-08 |
| | TOWN/VILLAGE OF HARRISON | | | | | | SHEET NO. 19A1 |
| | COUNTY: WESTCHESTER | | REGION: 8 | | | | |

IT IS A VIOLATION OF LAW FOR ANY PERSON, UNLESS THEY ARE ACTING UNDER THE DIRECTION OF A LICENSED PROFESSIONAL ENGINEER, ARCHITECT, LANDSCAPE ARCHITECT, OR LAND SURVEYOR, TO ALTER AN ITEM IN ANY WAY. IF AN ITEM BEARING THE STAMP OF A LICENSED PROFESSIONAL IS ALTERED, THE ALTERING ENGINEER, ARCHITECT, LANDSCAPE ARCHITECT, OR LAND SURVEYOR SHALL STAMP THE DOCUMENT AND INCLUDE THE NOTATION "ALTERED BY" FOLLOWED BY THEIR SIGNATURE, THE DATE OF SUCH ALTERATION, AND A SPECIFIC DESCRIPTION OF THE ALTERATION.

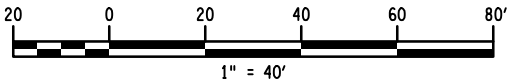
TOWN/VILLAGE OF HARRISON
WESTCHESTER COUNTY, NY



| UNION AVENUE PLANT KEY | | | | |
|------------------------|--------|-----------------------|-------------|--------------|
| QUANTITY | SYMBOL | BOTANICAL NAME | COMMON NAME | INSTALL SIZE |
| 1 | PM | PSEUDOTSUGA MENZIESII | DOUGLAS FIR | 6-7' |

LEGEND

PROPOSED STORM DRAINAGE STRUCTURE

PROPOSED STORM SEWER PIPE

FILE NAME = H:\Projects\2024\128-031 Harrison - Union Ave Sidewalks\Working\CADD\gnp\128-031.gnp_gnp_09.dgn
DATE/TIME = 3/19/2024 2:55:11 PM
USER = kdetrick
PLOT = NYSBOT.CME.PDF.plt of g

DESIGN SUPERVISOR D. ADAMS JOB MANAGER C. GEROUX DESIGN K. GENSLEER CHECK C. GEROUX DRAFTING K. DETRICK CHECK D. BORJAS PROJECT MANAGER C. GEROUX

PREPARED BY: DONALD D. ADAMS, P.E.
ON: 3/19/2024

ALTERED BY:
ON:



AS-BUILT REVISIONS
DESCRIPTION OF ALTERATIONS:

UNION AVENUE PEDESTRIAN SAFETY IMPROVEMENT PROJECT
MAMARONECK AVENUE TO 130 UNION AVENUE
TOWN/VILLAGE OF HARRISON
COUNTY: WESTCHESTER REGION: 8

PIN 8762.51

BRIDGES

CULVERTS

ALL DIMENSIONS IN FT UNLESS OTHERWISE NOTED

CONTRACT NUMBER

D040323

GENERAL PLAN

DRAWING NO. GNP-09

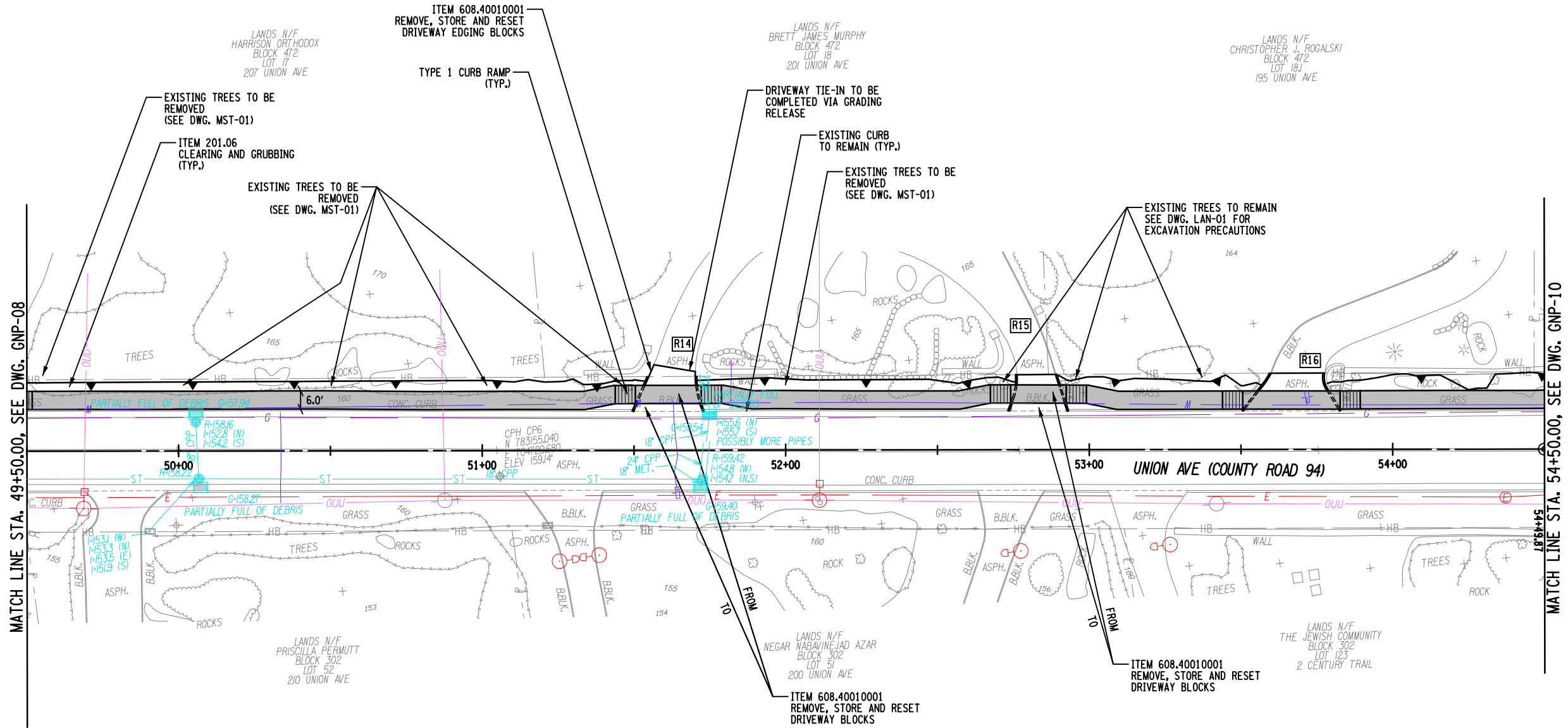
SHEET NO. 20A1

IT IS A VIOLATION OF LAW FOR ANY PERSON, UNLESS THEY ARE ACTING UNDER THE DIRECTION OF A LICENSED PROFESSIONAL ENGINEER, ARCHITECT, LANDSCAPE ARCHITECT, OR LAND SURVEYOR, TO ALTER AN ITEM IN ANY WAY. IF AN ITEM BEARING THE STAMP OF A LICENSED PROFESSIONAL IS ALTERED, THE ALTERING ENGINEER, ARCHITECT, LANDSCAPE ARCHITECT, OR LAND SURVEYOR SHALL STAMP THE DOCUMENT AND INCLUDE THE NOTATION "ALTERED BY" FOLLOWED BY THEIR SIGNATURE, THE DATE OF SUCH ALTERATION, AND A SPECIFIC DESCRIPTION OF THE ALTERATION.

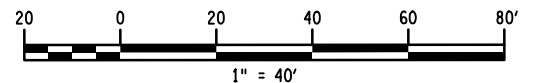


TOWN/VILLAGE OF HARRISON
WESTCHESTER COUNTY, NY

THIS SHEET SUPERSEDES
SHEET 20



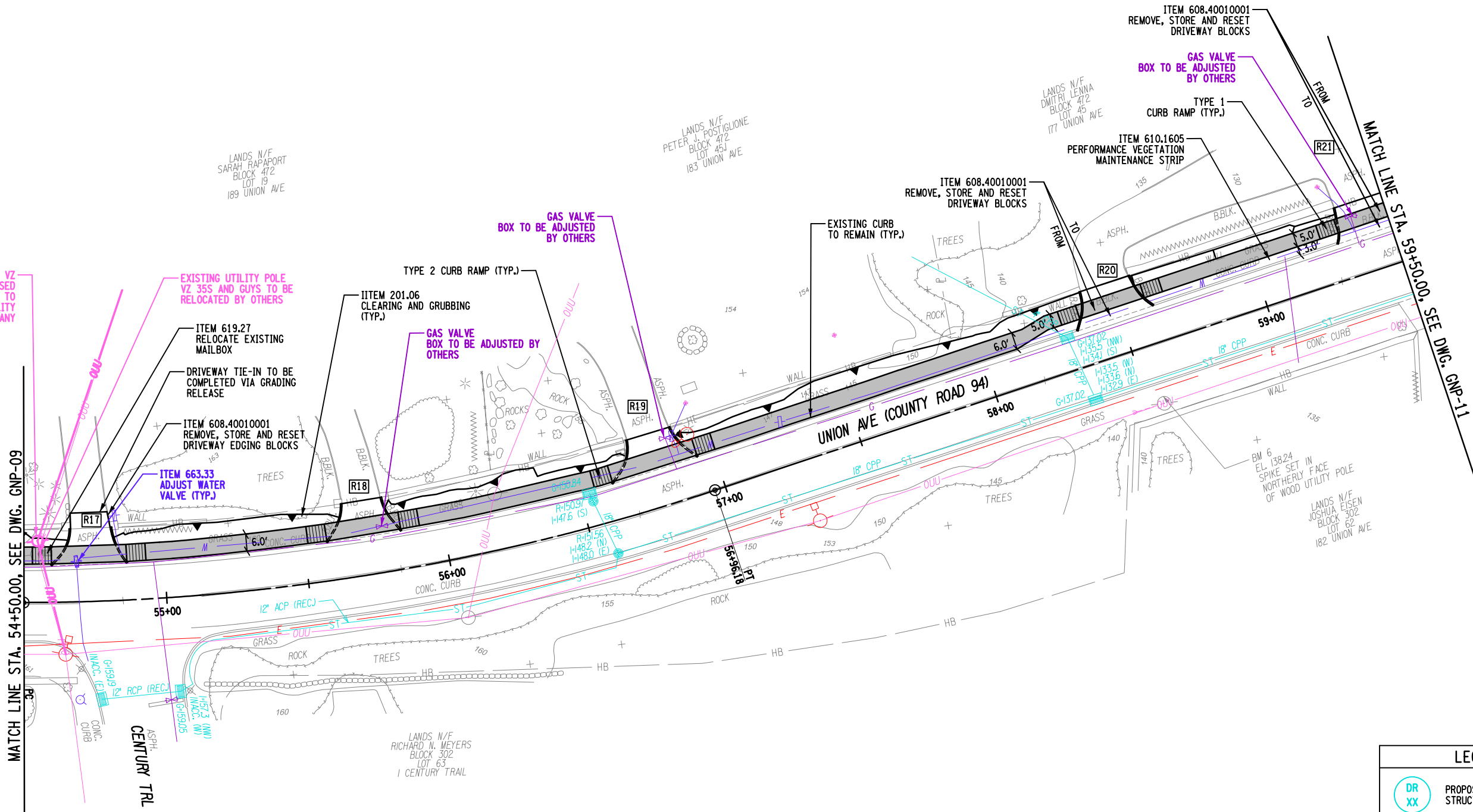
| LEGEND | |
|--------|-----------------------------------|
| | PROPOSED STORM DRAINAGE STRUCTURE |
| | PROPOSED STORM SEWER PIPE |
| | ITEM 608.0101 CONCRETE SIDEWALK |



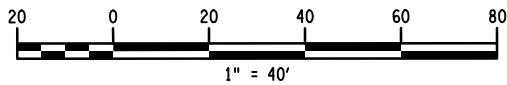
FILE NAME = H:\P\1228\1228-031 Harrison - Union Ave Sidewalks\Working\CADD\1228-031.opn-grp-10.dgn
DATE/TIME = 3/19/2024 2:55:11 PM
USER = kdetrick
PLOT = NYSDOT.CME.PDF.plt

DESIGN SUPERVISOR D. ADAMS JOB MANAGER C. GEROUX DESIGN K. GENSLE DRAFTING K. DETRICK CHECK C. GEROUX CHECK D. BORJAS PROJECT MANAGER C. GEROUX



THIS SHEET SUPERSEDES
SHEET 21



| LEGEND | |
|--------|-----------------------------------|
| | PROPOSED STORM DRAINAGE STRUCTURE |
| | PROPOSED STORM SEWER PIPE |
| | ITEM 608.0101 CONCRETE SIDEWALK |



| | |
|---|--------------------|
| PREPARED BY: DONALD D. ADAMS, P.E. ON: 3/19/2024 | ALTERED BY: ON: |
| | |

| | | | | | | | | | |
|--|--|----------------|-------------|---------|----------|---|--|--|--|
| AS-BUILT REVISIONS DESCRIPTION OF ALTERATIONS: | UNION AVENUE PEDESTRIAN SAFETY IMPROVEMENT PROJECT | | PIN 8762.51 | BRIDGES | CULVERTS | ALL DIMENSIONS IN FT UNLESS OTHERWISE NOTED | | CONTRACT NUMBER | |
| | MAMARONECK AVENUE TO 130 UNION AVENUE | | | | | GENERAL PLAN | | D040323 | |
| | | | | | | | | | |
| | TOWN/VILLAGE OF HARRISON | | | | | | | | |
| | COUNTY: WESTCHESTER REGION: 8 | | | | | DRAWING NO. GNP-10 | | | |
| | | SHEET NO. 21A1 | | | | | | | |
| IT IS A VIOLATION OF LAW FOR ANY PERSON, UNLESS THEY ARE ACTING UNDER THE DIRECTION OF A LICENSED PROFESSIONAL ENGINEER, ARCHITECT, LANDSCAPE ARCHITECT, OR LAND SURVEYOR, TO ALTER AN ITEM IN ANY WAY. IF AN ITEM BEARING THE STAMP OF A LICENSED PROFESSIONAL IS ALTERED, THE ALTERING ENGINEER, ARCHITECT, LANDSCAPE ARCHITECT, OR LAND SURVEYOR SHALL STAMP THE DOCUMENT AND INCLUDE THE NOTATION "ALTERED BY" FOLLOWED BY THEIR SIGNATURE, THE DATE OF SUCH ALTERATION, AND A SPECIFIC DESCRIPTION OF THE ALTERATION. | | | | | |  | |  TOWN/VILLAGE OF HARRISON WESTCHESTER COUNTY, NY | |

